

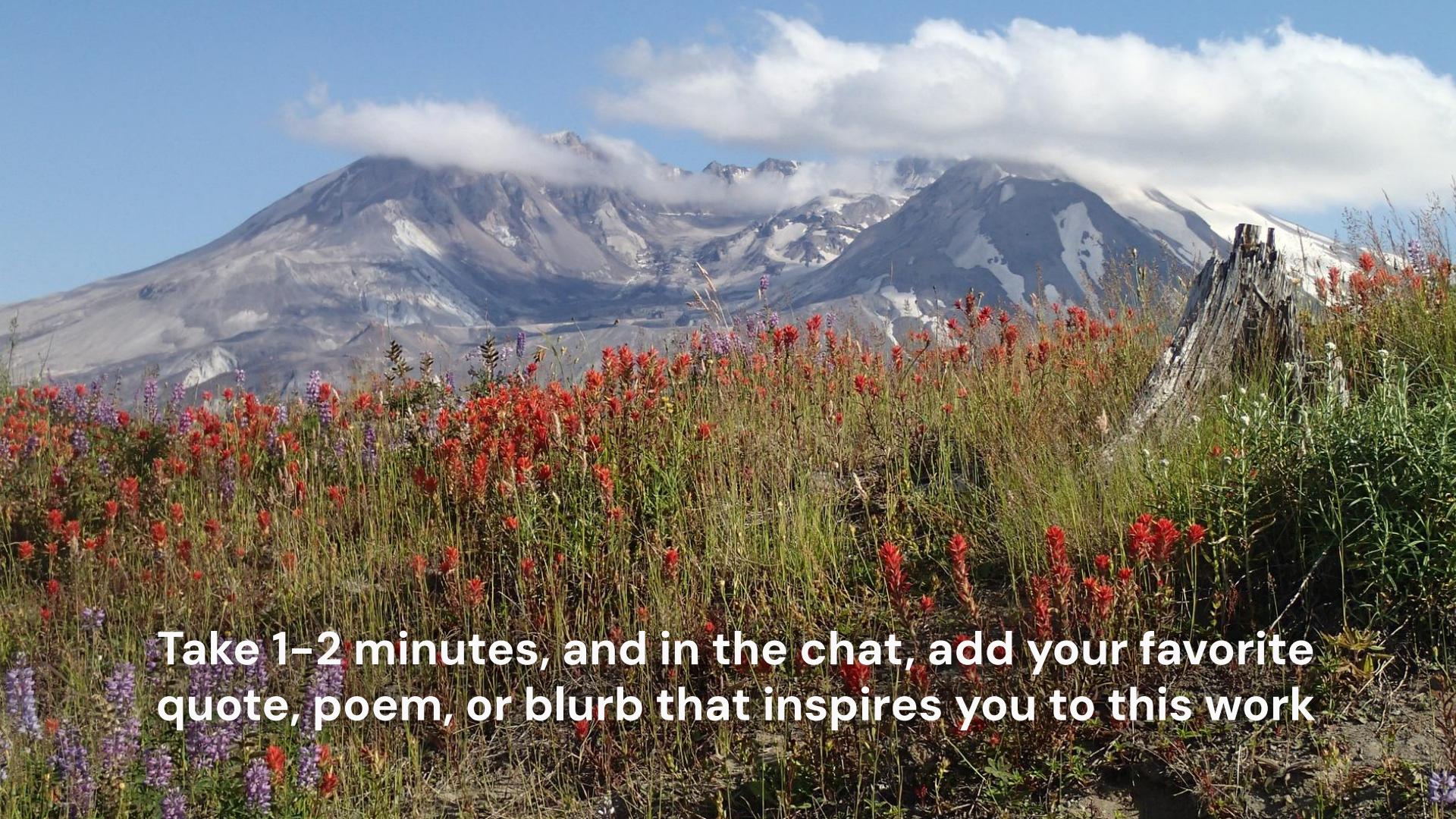


LHC PHASE 1 SESSION 1 *Content*



How the Land
Organizes Us

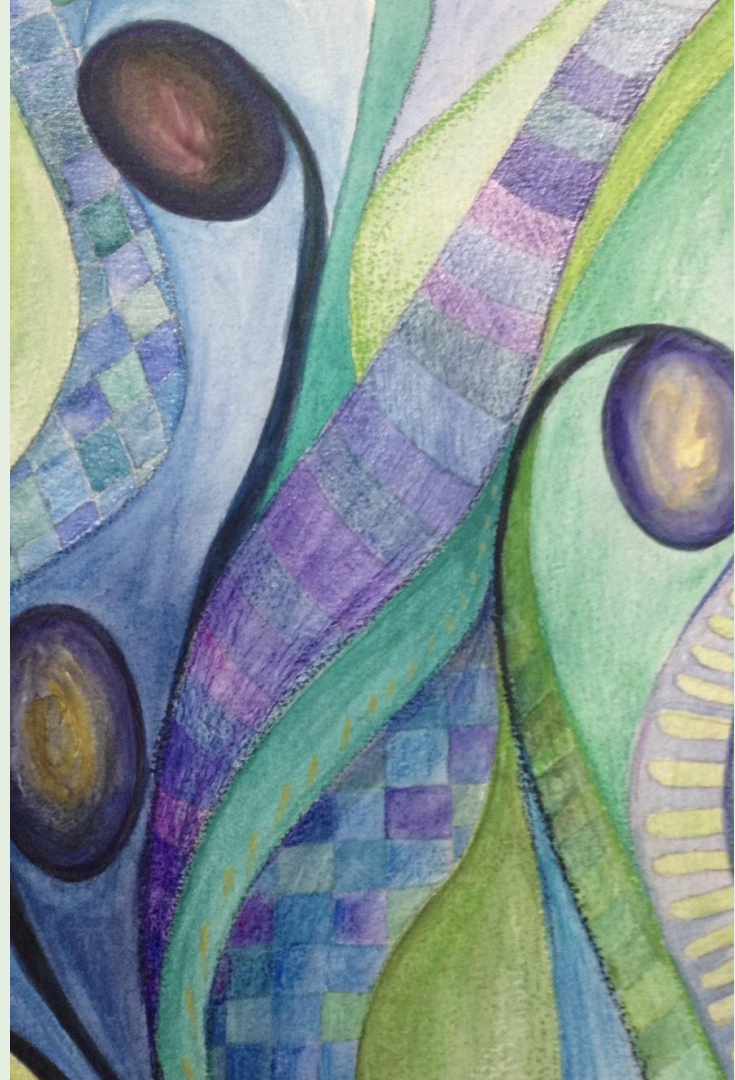
NOV 14TH, 2025



Take 1–2 minutes, and in the chat, add your favorite quote, poem, or blurb that inspires you to this work

Session 1 Agenda

- Agenda & Context setting
- Leading with Questions: How Nature Organizes Us
- LHC Bigger Picture
- Preparation & Next Steps
- Community Discussion



Regenerate Cascadia Team



CLARE ATTWELL

RC
Co-administrator



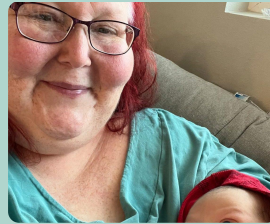
**BRANDON
LETSINGER**

DOB Executive Director,
RC Co-administrator



TAYA SEIDLER

RC Core Team, LHC
Program Manager



SUSAN FINE

Nonprofit Program
Officer



**DREW ALCOSER
LLANO**

Community Organizer
& Development



BEN MOSELEY

Operations Manager

Regenerate Cascadia Mission

We exist to regenerate the Cascadia bioregion...

**...and cultivate the conditions for a
regenerative movement to thrive.**



Welcome Landscape Groups!

- Welcome emails will go out next week.
- If you're here, your group has been accepted!
- Next step will be to set up an onboarding meeting
- Will work to make sure emails are set up, zoom lines, etc. Will also include all the info for what you need to take donations, grants, use insurance etc.

Department of Bioregion Ecosystem

In Cascadia... we see a funnel

General Public,
learning, teaching,
research, tool building

Beginning the process
of learning &
unlearning

CDOB

Identity,
community,
movement,
culture, protecting
the things we find
special.

RC

Long term
Regeneration,
and seeing
people
resourced.

Our work is global

Department
of Bioregion
(501(c)(3))
Backbone

Branches

DOB's

Seeds

Learning,
Research &
Mapping

Roots

APS &
FSPs

Cascadia is where we
do the work with each
other.

DOB's are where we
share the models,
learning and templates
with other bioregional
organizing teams
around the world.

RC Website: Landscape Groups' **Public** Interface

The screenshot shows the Regenerate Cascadia website. At the top is a green navigation bar with 'Login' and 'Register' buttons, and a Facebook icon. Below this is a white header with the 'REGENERATE CASCADIA' logo on the left, and a menu with 'ABOUT', 'LANDSCAPES', and 'OUR CALENDAR' in the center. A green button labeled 'SUPPORT A LANDSCAPE' is on the right. The main content area features a sidebar on the left with links for 'Recent Updates', 'Upcoming RC Events', 'Community Calendar', and 'Email Newsletter'. The main body displays four landscape cards, each with a photo and a title: 'Welcome Regenerate Duwamish' (river scene), 'Welcome Regenerate Vashon' (topographic map), 'Welcome Regenerate Mount Olympus (Olympic Peninsula)' (hand painting a mural), and 'Welcome Regenerate Skagitway' (foggy forest). Below the cards is a green bar with a 'Signup' button and a light green bar with a 'Login' button. At the bottom, a green banner features a photo of a group of people in a garden and the text 'Join Us As A Regenerate Cascadia Landscape Group'. Below this text is the link 'Administrative Support for On-The-Ground Landscape Teams'.

REGENERATE CASCADIA

ABOUT ▾ LANDSCAPES ▾ OUR CALENDAR ▴

SUPPORT A LANDSCAPE

Recent Updates
Upcoming RC Events
Community Calendar
Email Newsletter

Welcome Regenerate Duwamish

Welcome Regenerate Vashon

Welcome Regenerate Mount Olympus (Olympic Peninsula)

Welcome Regenerate Skagitway

Signup

Login

Join Us As A Regenerate Cascadia Landscape Group

Administrative Support for On-The-Ground Landscape Teams

- Landscape Pages
- Donations
- Public Events / Community Calendar
- Public Updates



HOME



Welcome (Start Here)



RC Announcements



Community Lounge



Create a Space

BIOREGEN PROGRAM



Landscape Groups Program



Landscape Hub Cultivator

Landscape Groups



Duwamish River Valley



Greater Victoria



Olympic Peninsula



Skagit River Valley



South Willamette Valley



The Gorge

MORE ACTIVITY

Landscape Groups · This is a space

SHOWING...

SORTED BY

All

Yours

Near You

Inactive



Duwamish River Valley



Host



RC Mighty Network:

Landscape Groups' **internal** work space

- Online community of practice for RC program delivery
- Many-to-many communication vehicle across Landscape Groups
- Dedicated Group/Tech support
- Resource hub: Schedules, Events, Recordings, Presentations, Tools, Process Guides, etc.
- Community / topic discussions

LHC Phase 1 Calendar

November 2025

SUN	MON	TUES	WED	THURS	FRI	SAT
						1
2	3	4	5	6	7	8
		Election Day				
9	10	11	12	13	14	15
		LHC EVENING LAUNCH (ALL THERE). Opening. Expectations for Phase 1. Dates. Nuts & Bolts.		10-11am MORNING Landscape Office Hours	10-11:30 am LHC Content Delivery Process Guides. Documenting. Culture. Prep RC funding & hiring.	Primary lens: Getting ready
16	17 Where is the healing? Where is the harm? (in the landscape)	18 MORNING LHC DOING B+C EVENING LHC DOING T+C	19	20 10-11am MORNING Landscape Office Hours	21 10-11:30 MORNING Landscape Community Steward Kick Off Call	
1	2	3 MORNING LHC DOING B+C EVENING LHC DOING T+C	4	5 Thanksgiving Day	6	7
8						

NOTES

- Clare away at Positive Deviant's final gathering Nov 2-9 (in purple)

LHC Phase 1 Calendar

December 2025

SUN	MON	TUES	WED	THURS	FRI	SAT
	1	2 MORNING LHC DOING B+C EVENING LHC DOING T+C	3	4 10-11am MORNING Landscape Office Hours	5 10-11:30 am LHC Content Delivery: Intro Story Deck Template and Guides, Showcase, Funding disbursement	6 Intro to story-based reporting & multi-capital value
7	8 Classroom 1 (S2): gathering inputs on how groups see their multi-capital value and what they want to inc in their stories	9 MORNING LHC DOING B+C EVENING LHC DOING T+C	10	11 10-11am MORNING Landscape Office Hours	12	13
14 Hanukkah	15 Classroom 2 (S2): Introduce the Story deck template	16 MORNING LHC DOING B+C EVENING LHC DOING T+C	17	18 10-11am MORNING Landscape Office Hours	19 10-11:30 MORNING Landscape Community Steward	20
21	22	23	24	25	26	27
28 Winter Solstice	29	30	31 Christmas Eve	Christmas Day		

NOTES

- Taya working on NoVo Grant application for all of DOB / CDOB / RC
- Working on planning and invitations for funders to RC Landscapes Showcase event - **Invites to go out by mid December**

LHC Phase 1 Calendar

January 2026

SUN	MON	TUES	WED	THURS	FRI	SAT
				1	2	3
				New Year's Day		
4	5	6 10-11:30 P1/S3 - Content planning for making the work visible (dry run pres @ dinner, invite lists, promotion, showcase)	7	8	9	10 Annual DoB/CDOB/RC Dinner - Celebratory, meet each other - Landscapes presenting story decks
11	12	13 MORNING LHC DOING B+C EVENING LHC DOING T+C	14	15	16	17
18	19 Martin Luther King, Jr. Day	20 MORNING LHC DOING B+C EVENING LHC DOING T+C	21	22	23 10-11:30 MORNING Landscape Community Steward	24
25	26 DUE DATE: For Story Deck and Written Component	27 MORNING LHC DOING B+C EVENING LHC DOING T+C	28	29 SAVE THE DATE: Online Presentation? GET FUNDERS HERE	30 SAVE THE DATE: Online Presentation? GET FUNDERS HERE	31

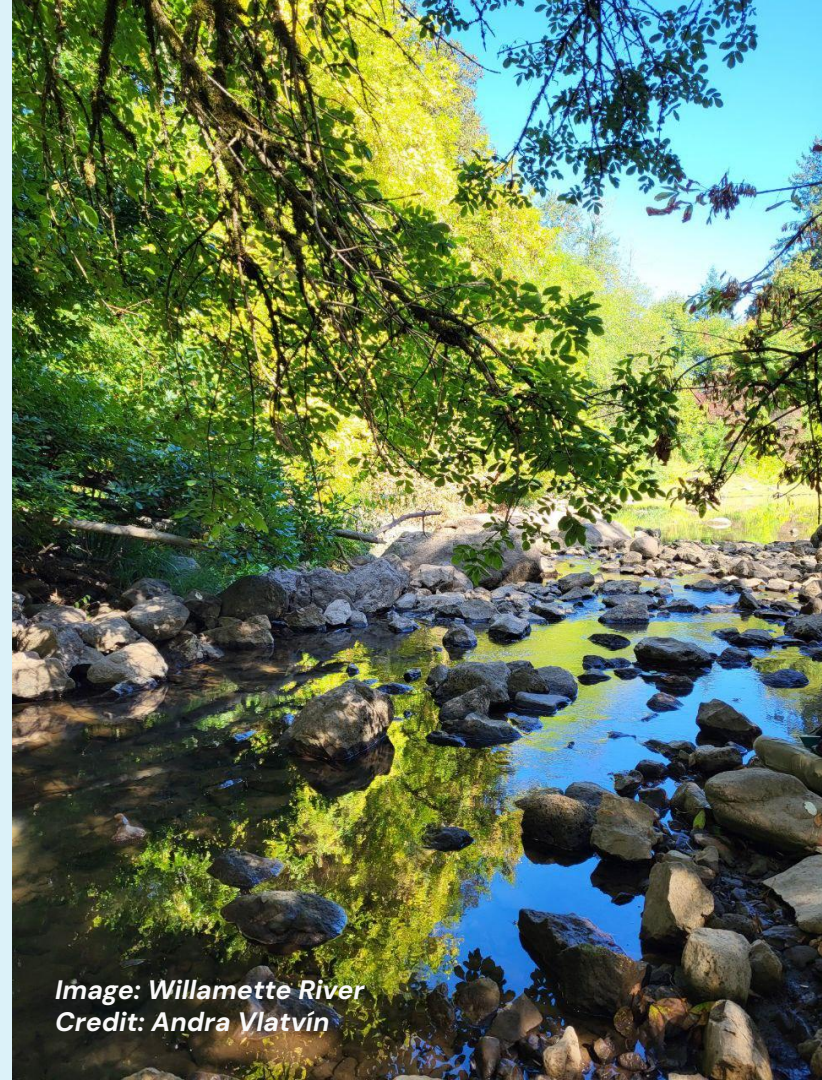
NOTES

- face to face engagement at annual dinner Jan 10th + online showcase event early Feb
- Story Decks completed by late January
- **Submit NoVo application in first week of February**
- Showcase Event: Very well produced and professional, like the BioFi Cultivator - our output showcase of phase one - sign up for recording | Audience: people in local landscapes, potential donors (even small) + RC bringing funders)



Learning

How the Land Organizes Us



*Image: Willamette River
Credit: Andra Vlatvín*

How is what we are doing different?

Starting Big... Global Work

- System Landscape Scale Holistic Planning
- How rivers and land guide us
- How does land guide us when we think outside of the context of cities, counties, states and nations?
- How does land guide us when we think seven generations into the future while recognizing seven generations in the past?



*Image: Joe Brewer and attendees,
Eugene Activation Tour*

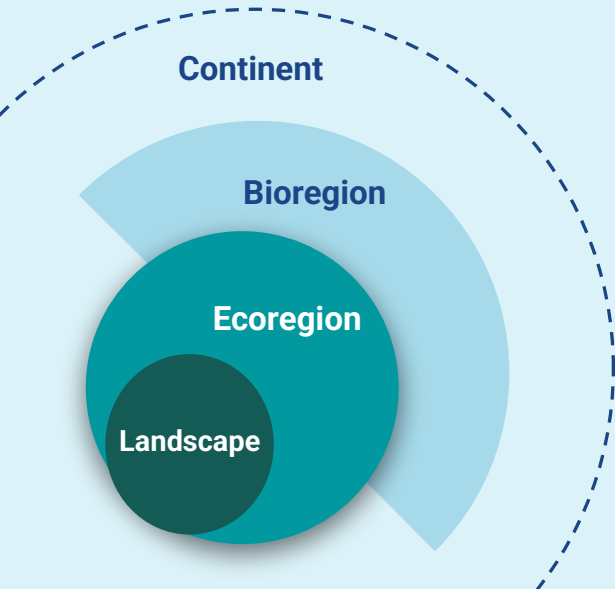
Frameworks of Life... Bioregions and life places



Image: Willamette Valley

Nested Scales of Regeneration

The Cascadia Bioregion...
A mid-link from local to global.



Connected portfolio approach



Image: Willamette Valley

Conversation:

What are the challenges regenerators face in your landscape?

- Where are the gaps in support?
- What gets in the way of us stewarding the land as a whole system?
- How are existing programs failing to address the systemic changes needed?



Inquiry...

What do we need for money to flow?

- What is the infrastructure we actually need?
- What is the cultural shift we need?
- What are the processes we need for equitable decision making, coordination, cooperation and governance?
- How are we telling our stories once we do? What is the purpose, who are we telling them to?

What are the conversations we need to have (in our teams and landscapes)?

- Who are we working with? Centering trauma. Centering voices. Care-centred parts of the system that are excluded currently.
- Budgets – for when flows start to be released – how are we making sure everyone has a voice?
- How do we have the hard conversations?
- How do we recognize and move beyond privileges.
- How do we track and share this learning.
- How do we protect our work when money begins to flow
- Documentation



LHC Bigger Picture



Our working definition of a Hub

Longer-term Vision



- Develop and maintain a regenerative project portfolio, local regeneration strategy, action plan, and budget—whilst ensuring that relationship, learning and land attunement inform the work. This requires a focus on stewardship that includes relational weaving and community cultural development—elements not typically named, highlighted or funded in the existing system.
- Participate in developing a bioregional financing facility and funding ecosystem that funds Landscape Hub project portfolios and regeneration strategies
- Monitor and sustain watershed-scale measurement, reporting and verification, context-based indicators, and bioregional carrying capacity for long-term regeneration
- Participate in documentation and learning to support whole system feedback, learning, and resource-sharing mechanisms for continuous processes
- Be willing to engage at the leading edge in co-creating new/old forms of participatory governance, particularly in regard to managing funding flows, finance systems, impact and risk



Funded regeneration teams, a coordinated initial bioregional strategy, vision and approach, co-create a proven template for the LHC model

Bioregional Frameworks

Portfolio based
approach to projects

Shared Stakeholder
Mapping & Regeneration
Strategy

Budgets for Teams and
Landscapes

Community Defined
Success Outcomes

Flow Funding Sandbox
Outcomes

Shared storytelling, documentation, iterative learning

Working with an MVP mindset

“The times are urgent, we must slow down.”

BAYO AKOMOLAFE

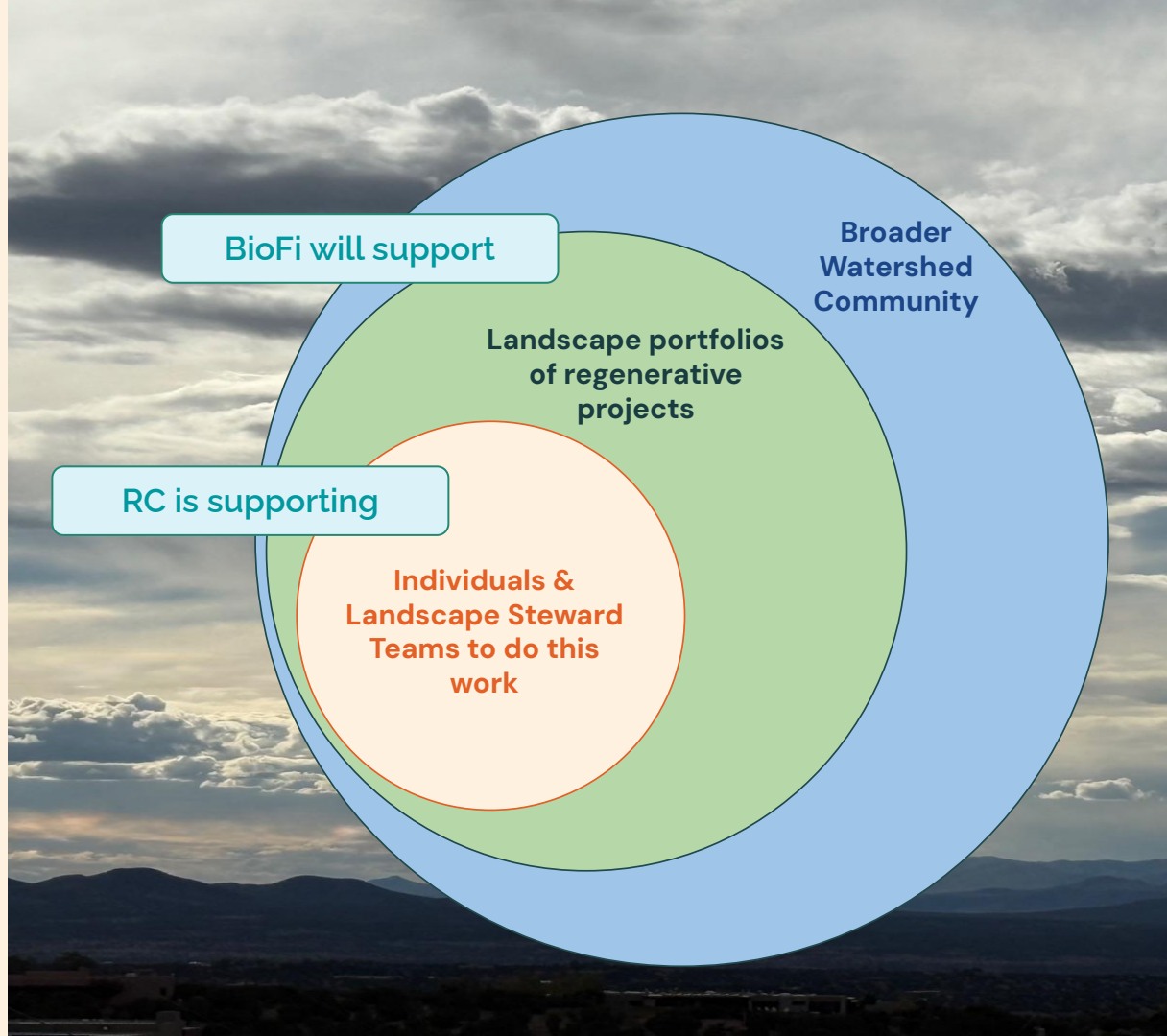


- **Slow down to speed up... slow down to BE the work, not just do the work.**
- Trust is the foundation of this work! Trust takes time. Trust develops and deepens through co-journeying together, including working through tension/rupture.
- At this stage the LHC pilot is about coordination, not governance (further down the track).
- Right relationship. A core capacity is the ability to hold relationships through the journey.
- Process is as important as outcomes. This is about cross-watershed learning and coordination, as much as it is about any one of our landscapes. Relationality, communication and sharing our work with each other.
- The LHC is our MVP for what we think is necessary to test at this stage to build solid foundations for the emergence of Landscape Hubs..

LHC focus is YOU... our current Landscape Stewards.

BioFi depends upon Stewards/teams from multiple landscapes being sustainably supported and committed to multi-regional coordination, collaboration and governance (long term).

That's why we're starting by disbursing funds to YOU to support you in engaging the LHC. **You are the bedrock that local and bioregional funding ecosystems depend on.**



RC is supported and growing.



Funders leaning in to support RC and BioFi

How our team has grown to help hold these relationships

The question isn't whether or not we will receive funding, but how much, how fast, and then how we are leveraging the funds to get other funders into the room.

Now it's time to support landscape teams & groups

Intended RC Outcomes



**We are working
toward:**

- **RC Fundraising Goal:** \$100K–\$250K directly for Landscape Groups) to fund regeneration teams next year (\$1,000–2,000 per Landscape Group, per month). The goal is to have your team supported initially, BEFORE your network.
- **Growing a Cascadia Regeneration Fund:** \$250K–500K as a yr 1 Regeneration Fund to be regranted out to external groups in 2026
- **Growing Local Landscape Funding Ecosystems:** Landscape groups working with local funders and donors to raise funds and support their teams & flow funding pilots
- **Coordinating and aligning:** to visualize how we can flow funding into the landscape in an equitable way:
 - Healthy and Equitable distribution mechanisms, in line with regenerative principles
 - Storytelling
 - Documenting

Next Steps

Confirm Classroom AM/PM Cohorts

- Tuesday AM Cohort (10:30am – 12:00pm):
 - Skagit
 - Olympic Peninsula
 - Whatcom
- Tuesday PM Cohort (7:00 – 8:30pm):
 - SWV
 - Whidbey Island
 - Vashon Island

